

A C H I L L E S 9 5

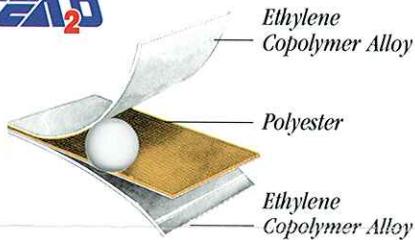


ALL AMERICAN ★ ALL ACHILLES

SEA₂O

THE FUTURE OF INFLATABLE FABRIC

With the new generation of Made-in-the USA Achilles Boats comes a revolutionary new inflatable boat fabric: SEA₂O. After researching and testing a range of materials to use in the fabric of our new boats, Achilles settled on a Dupont polymer called *Elvaloy*. Elvaloy is used in products requiring long life, weatherability and resistance to temperature extremes such as single-ply roofing membranes. Achilles modified this high molecular weight material to form a copolymer alloy fabric coating perfectly adapted



for marine use. Then, based on Achilles extensive experience with a variety of core fabrics, a super tough polyester woven fabric was chosen. The result was a super tough, durable and flexible inflatable boat fabric we call SEA₂O.

SEA₂O offers the same long term weatherability, high puncture resistance and superior resistance to chemicals and abrasions as Hypalon®. It meets or exceeds all recommended Coast Guard standards for inflatable boat fabrics, and has been rated "excellent" in independent tests for its resistance to gasoline, oil, chlorine, ultra violet rays and abrasion. SEA₂O also provides superb adhesion to its base polyester fabric and is readily adaptable to modern production techniques. This insures a higher level of consistency and quality control during the manufacturing process.

We wanted the best fabric in the world for our new All American lineup, and we believe we have it in SEA₂O. We have given our new fabric a full Five Year Warranty to back up this confidence. For years, our Hypalon-reinforced inflatable boat fabric set the standard in the industry. With SEA₂O, we are now setting an even higher standard.

100% U.S. Achilles

All new, all American, all Achilles. For the first time ever, the entire Achilles lineup is being manufactured in the United States using fabric, parts and accessories also made right in the U.S. This completes a process begun several years ago by Achilles to design and produce high quality inflatable boats specifically for the unique American market.

To achieve this, we've taken the experience gained from producing some of the best inflatable boats in the world for over 20 years and combined it with the latest inflatable boat technology and manufacturing techniques in our Oceanside, California factory. The result is an exciting 1995 lineup of all-new boats featuring Achilles quality and American "know-how."

From our sleek hard-bottomed sportboats to our practical tenders, every Achilles boat is "new" for 1995. All our made-in-the USA boats are being produced with a remarkable new fabric we customized from DuPont Elvaloy called SEA₂O. It is a revolutionary new material which actually improves upon the traditional Hypalon-reinforced Achilles fabric which, for years, has set the standard of excellence in the industry. Having a new manufacturing facility has allowed us to introduce a host of improvements into the production process which insure the highest standards of consistency and quality control. It also permits Achilles the luxury of immediately incorporating a number of design and feature improvements into the 1995 models.

The end result is a truly "All American" lineup of superb inflatable boats for every use. A history of quality, a future of innovation. That's Achilles today.



STORM

INFLATABLES

THE LIGHTWEIGHT ACHILLES LINE

In 1994 we introduced the Storm line, this year we've made it bigger and better with four boats ranging from 9 to 13 feet. Our Storm boats feature unique inflatable floors bonded to the rest of the boat. This not only makes these boats lightweight and easy-to-assemble or break down, but it also gives them extra buoyancy and a softer ride. Add in large tube diameters, and our Storm boats are capable of carrying passengers and a lot of gear comfortably. And that's what a good, practical inflatable is all about!

FULL FIVE YEAR WARRANTY ON FABRIC AND SEAMS

Our new SEA₂O Fabric is backed up by this strong warranty commitment!

New boats, new fabric, same commitment to customer satisfaction. That's Achilles for 1995. All our boats offer this outstanding warranty, backed up by a network of warranty repair stations in the U.S. and Canada.



Achilles



SPECIFICATIONS

MODEL	LOA (INSIDE)	BOA (INSIDE)	TUBE DIA.	HP RATING SHAFT LENGTH	WEIGHT	LOAD CAPACITY	PERSON CAPACITY	NO. AIR CHAMBERS
SG Series – Sport Grand								
SG - 110	11' 0" (8' 1")	5' 0" (2' 5")	16.0"	20 Standard	122 lbs.	1,280 lbs.	5	3 Plus Air Keel
SG - 124	12' 4" (8' 11")	5' 4" (2' 6")	17.0"	20 (6 - 35) Standard	175 lbs.	1,470 lbs.	5	4 Plus Air Keel
SG - 140	14' 0" (10' 0")	5' 9" (2' 9")	18.0"	30 (9.9 - 50) Long	221 lbs.	1,960 lbs.	6	4 Plus Air Keel
SG - 156	15' 6" (10' 11")	6' 3" (3' 0")	20.0"	35 (9.9 - 55) Long	264 lbs.	2,820 lbs.	8	5 Plus Air Keel
SE Series – Sport Economy								
SE - 12	12' 0" (8' 10")	5' 3" (2' 6")	17.0"	15 (4 - 25) Standard	128 lbs.	1,386 lbs.	5	4 Plus Air Keel
SE - 13	13' 2" (9' 4")	5' 9" (2' 9")	18.0"	20 (6 - 35) Standard	158 lbs.	1,760 lbs.	6	4 Plus Air Keel
HB Series – Hard Bottom *Sport Models								
HB - 90	8' 10" (6' 8")	4' 9" (2' 6")	14.0"	8 Standard	85 lbs.	750 lbs.	3	3
HB - 100	10' 2" (7' 7")	4' 10" (2' 4")	15.0"	9.9 Standard	118 lbs.	920 lbs.	4	3
HB - 110	11' 0" (8' 4")	5' 0" (2' 5")	16.0"	20 Remote / 15 Tiller Long Shaft	165 lbs.	1,280 lbs.	5	3
HB - 110S*	11' 0" (8' 4")	5' 0" (2' 5")	16.0"	30 Remote Long Shaft	245 lbs.	1,280 lbs.	5	3
HB - 124	12' 4" (9' 6")	5' 4" (2' 6")	17.0"	35 Remote / 25 Tiller Long Shaft	207 lbs.	1,470 lbs.	5	4
HB - 124S*	12' 4" (9' 6")	5' 4" (2' 6")	17.0"	40 Remote Long Shaft	280 lbs.	1,470 lbs.	5	4
HB - 140	14' 0" (11' 7")	5' 9" (2' 9")	18.0"	55 Remote / 40 Tiller Long Shaft	323 lbs.	1,960 lbs.	6	4
SPD Series – Sport Dinghy Deluxe								
SPD - 4AD	9' 8" (6' 10")	4' 10" (2' 4")	15.0"	9.9 Standard	87 lbs.	946 lbs.	4	3 Plus Air Keel
SPD - 5AD	10' 8" (7' 7")	4' 11" (2' 4")	15.4"	9.9 (4 - 15) Standard	108 lbs.	1,078 lbs.	5	3 Plus Air Keel
LEX Series – Light Extra Sport Dinghy								
LEX - 260	8' 6" (5' 10")	4' 8" (2' 2")	15.0"	6 Standard	68 lbs.	836 lbs.	4	2 Plus Air Keel
LEX - 290	9' 6" (6' 9")	4' 8" (2' 2")	15.0"	9.9 Standard	75 lbs.	924 lbs.	4	2 Plus Air Keel
LEX - 320	10' 6" (7' 2")	4' 11" (2' 4")	15.4"	9.9 Standard	89 lbs.	970 lbs.	5	3 Plus Air Keel
STORM Series – Inflatable Floor								
STORM - 9'	9' 0"	5' 0" (2' 4")	16.0"	4 - 6 Standard	57 lbs.	1,030 lbs.	4	3 Plus Air Floor
STORM - 10'	10' 0"	5' 0" (2' 4")	16.0"	4 - 9 Standard	69 lbs.	1,250 lbs.	4	3 Plus Air Floor
STORM - 11'	11' 0"	5' 0" (2' 4")	16.0"	6 - 15 Standard	73 lbs.	1,350 lbs.	5	3 Plus Air Floor
STORM - 13'	13' 0"	5' 9" (2' 9")	18.0"	15 - 25 Standard	88 lbs.	1,670 lbs.	6	4 Plus Air Floor

Specifications subject to change without notice.

Eastern Sales Office
P.O. Box 517
355 Murray Hill Parkway
East Rutherford, New Jersey 07073
Phone: (201) 438-6400
Fax: (201) 438-2618

Northwest Sales Office
P.O. Box 2287
1407 80th Street, S.W.
Everett, Washington 98203
Phone: (206) 353-7000
Fax: (206) 347-5785

Southwest Sales Office
10230 Norwalk Blvd.
Santa Fe Springs, California 90670
Phone: (310) 944-4560
Fax: (310) 946-0511



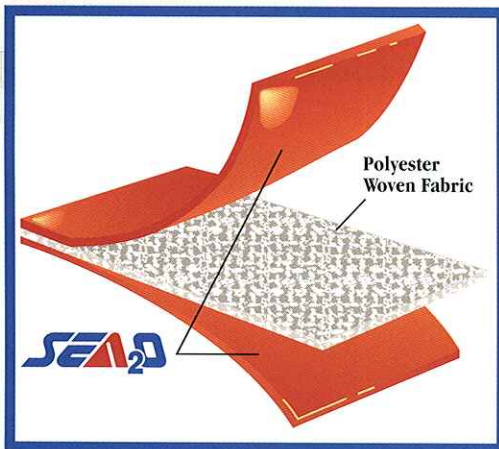
I N T R O D U C I N G

A New-Generation, High-Performance Material for the Production of Achilles Inflatables



Extensive research and testing have produced an advanced, super-tough fabric that is uniquely suited to the manufacture of inflatable boats.

SEA20 is a specially formulated material featuring long-term flexibility, outstanding resistance to chemicals and abrasion, and excellent high/low temperature service and weatherability.



SEA20 fabrics are coated with an ethylene co-polymer alloy to achieve enhanced performance. We're so confident in it that it comes with a 5-year warranty.

Elvaloy,[®] an ethylene co-polymer alloy, was developed by DuPont[®] and became SEA20 when it was modified by Seaman Corporation for use in the manufacture of Achilles inflatable boats. SEA20 is in many ways a superior alternative to Hypalon[®] with the added advantage of being radio frequency weldable for more efficient production.

This material has been in service in the construction industry for the past 30 years as single ply roofing membranes, geomembranes, and in many other applications where long life, weatherability, and resistance to temperature extremes are imperative.

Achilles had adapted this exciting material for inflatable boat construction, creating a new generation of all-American Achilles Inflatables that promise to set a new standard in the inflatable boat industry.

Chemical Resistance Comparison

Chemical or Element	SEA20	Hypalon	PVC
Gasoline	★★★★	★★★★	★★
Oil/Gas	★★★★	★★★★	★★
Chlorine	★★★★	★★★	★★★★
Ultra-Violet Rays	★★★★	★★★★	★★
Ozone	★★★★	★★★★	★★
Abrasion	★★★★	★★★★	★★★★

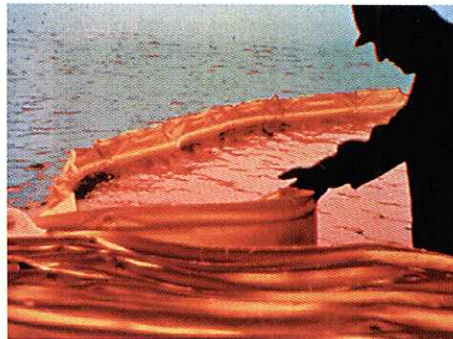
★★★★ Excellent ★★★ Good ★★ Fair ★ Poor

FEATURES

SEA20 is a high molecular ethylene copolymer alloy coating over a super-tough polyester woven fabric.

Key features of this material include:

- Exceptional strength and durability
- Outstanding UV resistance
- High abrasion and puncture resistance
- Excellent adhesion to base fabric
- Long-term flexibility and weatherability
- Radio frequency weldable
- Superior resistance to chemicals and fuels
- Friendlier to the environment than Hypalon



Left: Exposure to high heat, UV light and winds are no match for the components that make up SEA20.

Middle: Used in oil spill booms which must withstand constant contact with crude oil, UV light and salt concentrations, while remaining flexible.

Right: SEA20 ensures that the new generation of Achilles boats will have the highest quality and element resistance features.

US Coast Guard Standards For Inflatable Boat Fabric

Test Name	Test Standard	SEA20 Result
Coating Adhesion	16 lbs./in.	Meets or Exceeds
Tear Strength	16 lbs.	Meets or Exceeds
Break Strength	300 lbs./in.	Meets or Exceeds
Resistance to Cracking*	Must not crack when bent over 1/8" rod	Meets or Exceeds
Low Temp. (-20° F)	Coating must not crack	Meets or Exceeds
Resistance to Petroleum Products	No more than 5% decrease**	Meets or Exceeds
Tabor Abrasion	Must not wear through	Meets or Exceeds

* After 100 hours of weathering **Includes Reg. Gas and Gas/Oil; Warp & Fill tested



Headquarters & Sales Office

1407 80th Street SW • Everett, WA 98203 • (206) 353-7000 • Fax (206) 347-5785

Mailing Address

P.O. Box 2287 • Everett, WA 98203

Los Angeles Sales Office

10230 Norwalk Blvd. • Santa Fe Springs, CA 90670 • (310) 944-4560 • Fax (310) 946-0511

New Jersey Sales Office

355 Murray Hill Parkway • East Rutherford, NJ 07073 • (201) 438-6400 • Fax (201) 438-2618

STORM

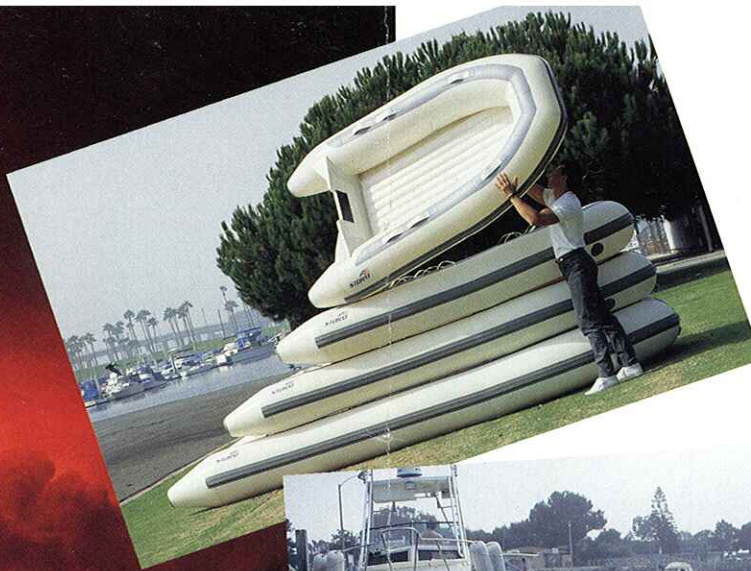
0930: Good day to put this inflatable through its paces. Maybe get in a little fishing. **1000:** Super easy to inflate and launch this Storm. I can sit anywhere with these collapsible handles. **1015:** Channel choppy, but boat stable with this inflatable keel. Inflatable floor is really comfortable. **1035:** Passed two mile buoy. In open water, running fast. **1115:** Couple of rock fish is all. **1130:** Change of plans, time to go diving. **1530:** Head for home. This Storm really flies. **1615:** At the ramp. Storm packs with a snap. No bulky floors or keels to disassemble. **1630:** On the way home. What a great feeling to own a Storm!




STORM
CALIFORNIA INFLATABLES

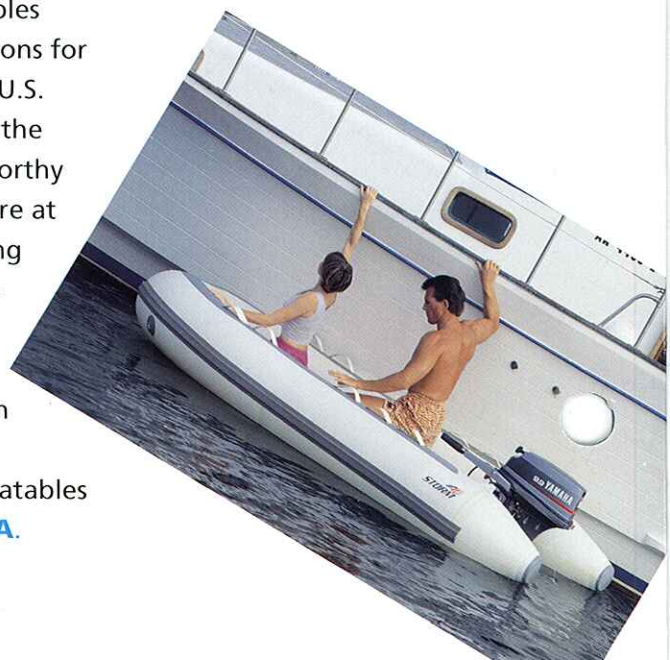


**SEE THE
STORM
AND
WATCH IT
REIGN**



A Storm is coming...

We've been building inflatables that meet military specifications for years. The U.S. Military and U.S. Coast Guard count on us for the toughest, fastest, most seaworthy inflatables available anywhere at any price. Now, we're putting all our experience into a line of performance craft that you can put all your confidence in – and feel even better about, because every ***Storm*** from California Inflatables is **100% MADE IN AMERICA.**



STORM

**For quality, safety, utility –
and just for the fun of it...**

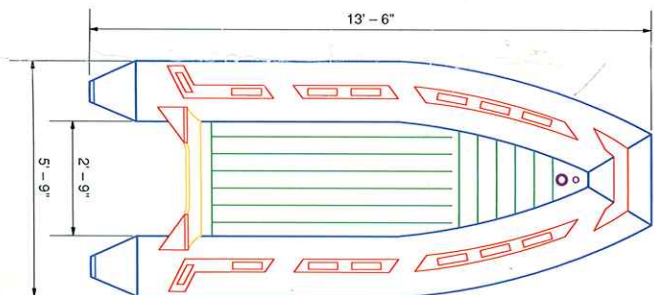
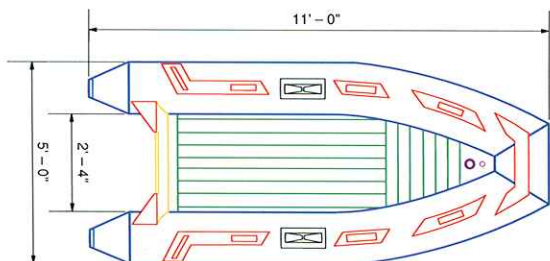
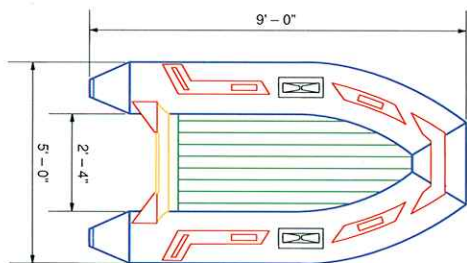
When you flat-out refuse to compromise on safety for your passengers and crew **Storm** is the name to keep on deck. On the other hand, when you are choosing an inflatable purely for the fun of it – whether it is for camping, fishing, river-running, water skiing, or maybe just running about – **Storm** is the name to keep in mind. Not only for safety, but for compactness, convenience, and all around utility.

Our base cloth is top-grade nylon, coated with **AEROFLEX1000**. It's the same material we use in our military assault craft because of its superior strength, abrasion resistance, and air retention. **AEROFLEX1000** has the highest degree of ultraviolet resistance in its class. Multiple air chambers offer maximum safety and stability – precision-joined and heavily reinforced for extreme durability. Even the floor is inflatable, resulting in a softer ride – with fewer rigid parts to haul and handle. Our inflatable keel adds

buoyancy and guarantees greater maneuverability. All valves are high air volume and flush-mounted.

...And watch it reign

We've built each **Storm** model to be the finest craft of its size and type. You can put your confidence in it. Because we put our name and a no-nonsense warranty behind it. See the **Storm** at better marine supply and boat dealers.



	9 FT	11 FT	13 FT
DIMENSIONS			
Overall length	9'	11'	13'6"
Inside width	2'4"	2'4"	2'9"
Outside width	5'0"	5'0"	5'9"
Tube diameter	16"	16"	18"
AIRTIGHT COMPARTMENTS			
	2	2+1	3+1
POWER			
Recommended (HP)	4	6	15
Maximum (HP)	6	9.9	20
WEIGHT (Lb)			
	57	73	88
CAPACITIES			
Maximum payload (Lb)	1030	1350	1670
Persons	4	5	6

All specifications and prices are subject to change without notice.



2608 Temple Heights Drive, Oceanside, CA 92056
619.724.8300 619.724.9531 Fax

